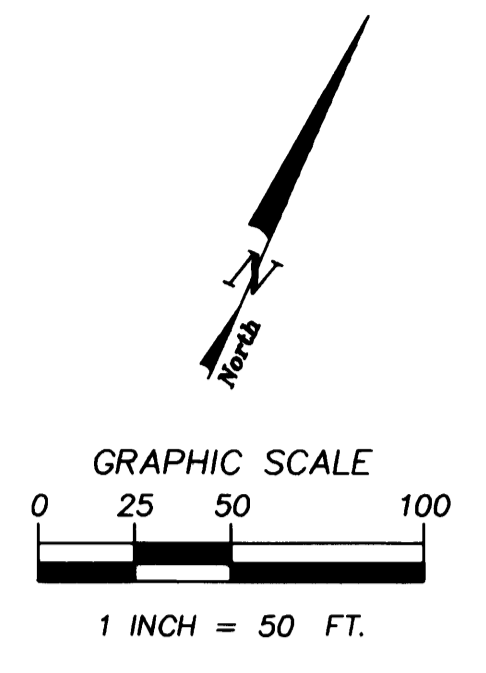
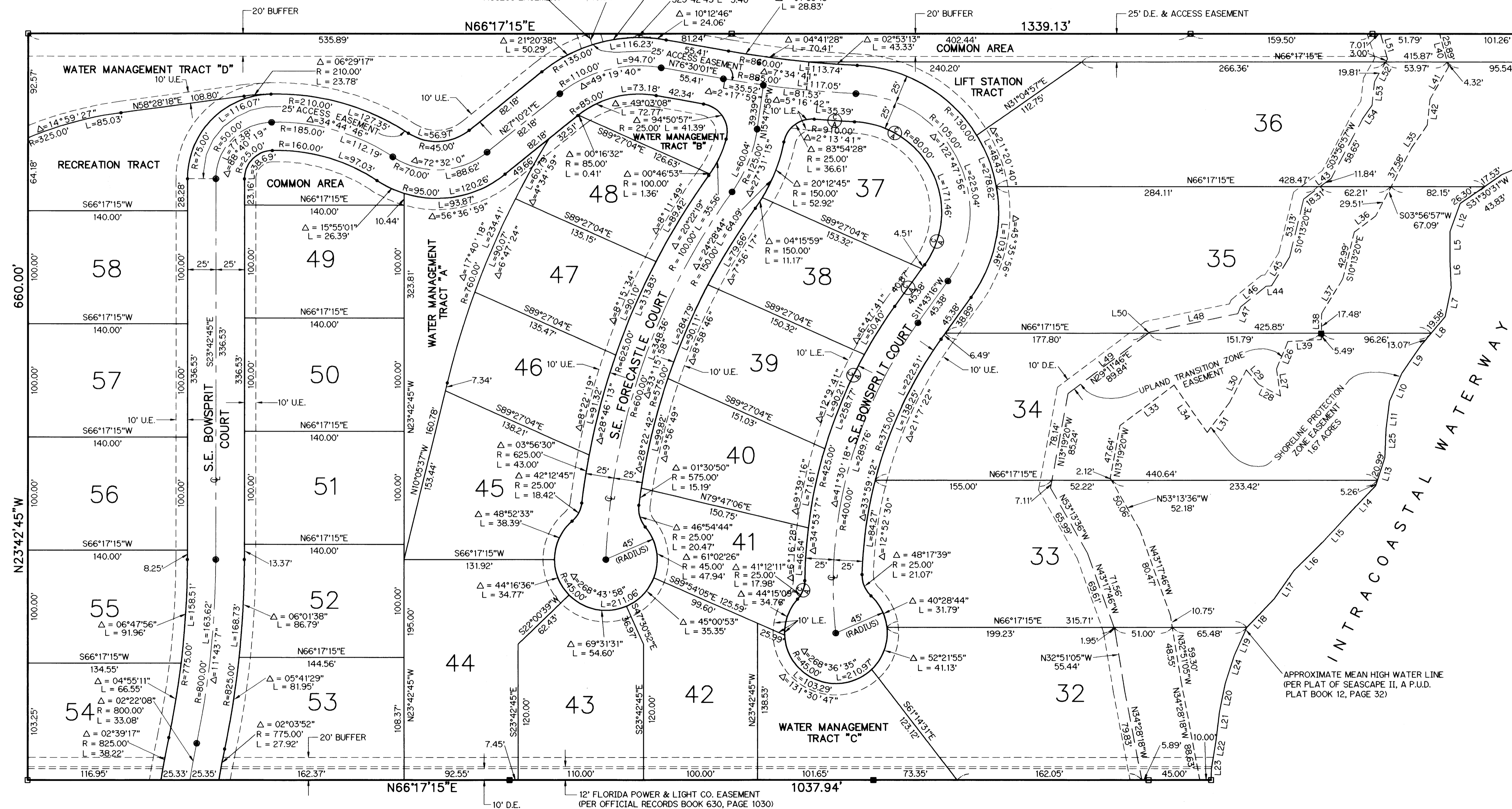


A PLAT OF  
**THE REEF, PHASE II**  
 BEING A REPLAT OF THE COLONY OF ROCKY POINT, A P.U.D.  
 AS RECORDED IN PLAT BOOK 14, PAGE 5  
 PUBLIC RECORDS OF MARTIN COUNTY, FLORIDA  
 LYING IN THE HANSON GRANT, MARTIN COUNTY, FLORIDA

File # 1169238  
 Plat Book 14  
 page 6  
 Sheet 2 of 2



SCHOONER OAKS CONDOMINIUM  
 LOT 18 OF THE COMMISSIONER'S SUBDIVISION OF LOTS 13 AND 14  
 OF THE HANSON GRANT, PLAT BOOK 1, PAGE 89



LINE DATA		
LINE	DIRECTION	DISTANCE
L1	S26°03'33"E	25.02'
L2	S37°12'26"E	25.71'
L3	S32°48'16"E	25.32'
L4	S21°25'17"E	25.02'
L5	S26°00'11"E	25.02'
L6	S12°24'05"E	25.50'
L7	S16°19'02"W	32.65'
L8	S10°30'10"W	30.23'
L9	S00°02'10"W	27.31'
L10	S16°52'09"E	25.18'
L11	S03°54'48"E	26.57'
L12	S05°58'05"E	26.25'
L13	S20°07'06"W	34.66'
L14	S18°54'05"W	33.97'
L15	S21°17'15"W	35.36'
L16	S10°30'12"W	30.23'
L17	S20°07'06"W	34.66'
L18	S00°02'13"W	27.31'
L19	S12°24'09"E	25.50'
L20	S16°52'11"E	25.18'
L21	S14°37'20"E	25.32'
L22	S22°31'04"E	9.98'
L23	S05°58'04"E	26.25'
L24	S21°25'19"E	25.02'
L25	S01°29'41"E	26.24'
L26	S32°07'33"E	24.09'
L27	N85°26'13"W	21.54'
L28	N63°55'03"W	17.05'
L29	N03°09'06"E	32.51'
L30	S12°53'36"W	32.77'
L31	S29°11'46"W	59.21'
L32	N58°33'52"W	51.11'
L33	S10°32'03"W	24.89'
L34	S29°27'23"W	23.43'
L35	S07°43'44"W	35.80'
L36	S23°11'24"E	22.97'
L37	S62°40'29"W	29.35'
L38	S38°48'40"E	30.21'
L39	S05°47'50"W	32.92'
L40	S17°41'20"E	23.45'
L41	S29°27'23"W	30.15'
L42	S62°40'29"W	4.98'
L43	S07°43'44"W	29.68'
L44	S21°25'17"E	28.78'
L45	S01°29'41"E	6.59'
L46	N54°24'08"E	78.80'
L47	S29°11'46"W	88.12'
L48	N29°11'46"E	1.72'
L49	S38°48'40"E	23.19'
L50	S05°47'50"W	22.81'
L51	S17°41'20"E	21.27'
L52	S10°32'03"W	15.20'

**LEGEND:**  
 □ DENOTES P.R.M. (PERMANENT REFERENCE MONUMENT) FOUND NO. 3541  
 ■ DENOTES P.R.M. (PERMANENT REFERENCE MONUMENT) SET NO. LS 4382  
 ● DENOTES P.C.P. (PERMANENT CONTROL POINT) SET NO. LS 4382  
 U.E. DENOTES UTILITY EASEMENT  
 D.E. DENOTES DRAINAGE EASEMENT  
 L.E. DENOTES LANDSCAPE EASEMENT  
 ⊕ DENOTES CONTROL OF ACCESS (NO VEHICULAR ACCESS WITHOUT THE APPROVAL OF THE BOARD OF MARTIN COUNTY COMMISSIONERS)

**BEARING BASE:**  
 THE NORTH LINE OF THE PLAT OF THE REEF IS TAKEN TO BEAR N 66°17'15"E AND ALL BEARINGS SHOWN HEREON ARE RELATIVE THERETO.

- NOTES:**
- EACH NUMBERED TRACT DEPICTED HEREON IS A LOT.
  - THERE SHALL BE NO BUILDING OR ANY OTHER KIND OF CONSTRUCTION OR TREES OR SHRUBS PLACED ON DRAINAGE EASEMENTS.
  - THERE SHALL BE NO BUILDING OR OTHER PERMANENT STRUCTURES PLACED ON UTILITY EASEMENTS.
  - ALL LOT LINES ARE NON-RADIAL, UNLESS NOTED OTHERWISE.

**LINDAHL, BROWNING, FERRARI, & HELLSTROM, INC.**  
 CONSULTING ENGINEERS, PLANNERS & SURVEYORS

210 JUPITER LAKES BLVD. 2400 S.E. MONTEREY ROAD 2222 COLONIAL ROAD 2000 PALM BEACH LAKES BLVD.  
 BLDG. 2300, SUITE 104 SUITE 300 SUITE 201 SUITE 702  
 JUPITER, FL 33468 STUART, FL 34996 FT. PIERCE, FL 34956 WEST PALM BEACH, FL 33409  
 407-746-9248 407-286-2883 407-461-2430 407-684-3375

2 2

Sheet of